

**Geodetic Supply & Repair Pty Ltd**  
*T/A GSR Laser Tools*  
 Unit 7 - 7 Prindiville Drive, Wangara WA 6065  
 P.O.Box 1305, Wangara WA 6065  
 Phone : (08) 9409 4058  
 A.B.N. 63 950 351 762



## Richter Measuring Tools - Germany Electrical Contact Gauge

For measuring the water level in wells also in noisy surroundings. Touches the probe the surface of the water a light beam and the buzzer sounds at the winding device. Both can be switched on through the water only. Light and buzzer switch off immediately after the probe comes off the water.

### Measuring tape:

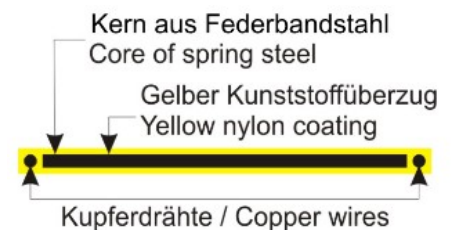
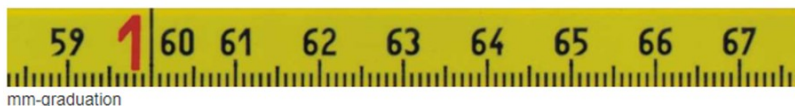
Flat lying green tape with a core of spring steel with 2 copper wires coated with nylon. The spring steel is treated with a primer which gives an especially good adherence of the nylon coating on the tape steel.

### Graduation:

Black millimetre graduation over total length, black centimetre and decimetre figures, metre figures in red, repeated metre figure before each decimetre.

### Probe:

Made of refined steel with electrode and insulation, diameter 15 mm



9 Volt power block

3 function switch

"0" = device switched off

"ON" = device switched on

"TEST" = battery test

### Signal:

LED and buzzer

### Winder:

strong winding device of ABS with stopper and winding knob, carrying handle and stand feet, 2 clamps for keeping the probe when not in use.

### Refills:

There are refills available for the electrical contact gauges. These are generally supplied with the probe because the probe is sealed to avoid penetrating of water.

mm graduation, cm and dm figures in black

red metre figures, repeated before each decimetre

Each electrical contact gauge is supplied in strong carrying case.