

AUSTRALIAN FIRST

Tommi with Manual Dual Grade



Model LR 410H

SELF LEVELLING ROTATIONAL LASERS - Class 2



A Universal Construction Laser for:

- ▶ Concretors
- ▶ Earth Works
- ▶ Interior Fitout
- ▶ Drainage
- ▶ Builders
- ▶ Plumbers
- ▶ General Construction

Tommi LR 410H Specifications

Beam	Visible
Laser Diode	630-670 nm, class 2
Accuracy	1.8mm @ 30m
Self-levelling	±4°
Working Range	1100m with Smart Detector
Functions	
Slope/Tilt	±4°
Scanning	Yes
Height Alert	Yes
Rotational Speed	400, 800 & 2000rpm
Power Supply Provided	
	1) 4-C Cell Alkaline Battery 2) Li-ion Battery & Recharger
Environment	IP55
Weight of Laser	1.9kg
Package includes	
	• Rotational Laser • 2 Battery Sources • Laser Glasses • Target • Manual User Guide • Smart Detector • Construction Tuff Carry Case • Calibration Certificate

FEATURES

- **Visible Beam** (635nm) also great for interiors
- **Accurate** 1.8mm@30m
- **Manual Grade** ±4%
- **Laser Class 2** Allowed on all sites - **SAFE**
(Class 3 lasers have restrictions on sites in most states)
- **Long Range** 1100m (diameter) with Smart Receiver
- **Two Battery Sources Provided**
 - ▲ 4 x C Cells Alkaline - 50 hours
 - ▲ Lithium-ion Rechargeable Battery 29 hours
- **3 Rotational Speeds** - 400, 800 & 2000rpm
- **Built Construction Tuff** - built in handle
- **Includes World First Smart Receiver & Clamp** (see over for details)
- **5 Year No Excuse Warranty**
- **Height Alert**
- **Calibration Certificate** - In Adjustment - piece of mind



Easy to use control panel



Horizontal Visible Beam



Robust padded carry case

Tomi

Model LR 410H

Australia's most affordable Fully Functional Horizontal Laser with Manual Dual Grade



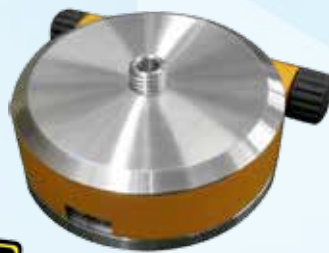
Optional Accessories for your Tomi LR 410H



UNIVERSAL MOUNT

Can be used in vertical position, wall mount or horizontal on ground for layout, made of metal for long life.

Model W-96



ROTATIONAL BASE

Heavy duty 360° base with horizontal graduations and slow motion screws. Fits on tripod.

Model W-95



REMOTE CONTROL

For LR series lasers. Controls rotation speed, scans and manual grade in both X and Y direction.

Model RC

TILTABLE MOUNT

for matching Slope or manual Grade.

Model W-90



Your Tomi LR 410H Includes:

Introducing - Unique World First

SMART DETECTOR

All in One
Rotary & Line Laser
detects both
RED & GREEN beams

Features:

- ▶ 3 accuracy levels $\pm 1\text{mm}$, 2mm & 3mm
- ▶ Front and rear displays
- ▶ Long range - 550m radius - Rotational
- ▶ Range - Line 150m (Green) & 80m (Red)
- ▶ Auto shutoff - 18mins
- ▶ IP67 highest water/dust proof ratings
- ▶ Magnet at top of receiver for steel profiles
- ▶ Backlit display ▶ Inbuilt level
- ▶ Strong clamp system ▶ 3 sound levels
- ▶ 2 Year Warranty



REAR



Made in Germany

Smart Detector
attached to heavy
duty clamp (included)

Model PNLUD14



Inbuilt magnets at top of receiver



AUTHORISED DEALER

GSR Laser Tools

Unit 7 / 7 Prindiville Drive - Wangara WA 6065

Ph: 08 9409 4058

sales@gsrlasertools.com.au - www.gsrlasertools.com.au