

TRUPULSE® LASER SERIES



- + Distance
- + Height
- + Azimuth
- + 2D Slope Grade
- + 3D Missing Line
- + Laser Mapping
- + Remote Positioning
- + GPS Laser Offsets



www.gsrlasertools.com.au

 **LASER[™]
TECHNOLOGY**
Measurably Superior®

LTI TruPulse® Laser Series

- Measures Slope Distance (SD) + Inclination (INC) in Degrees or Percent
- Calculates Horizontal Distance (HD) + Vertical Distance (VD) + Height (HT) + 2D Missing Line (ML)
- Distinguishes desired target from surrounding obstructions with Closest + Farthest + Continuous + Filter modes
- Mounts to tripods and has quality optics that enhance your field of view

TruPulse® 200L

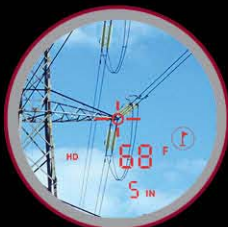
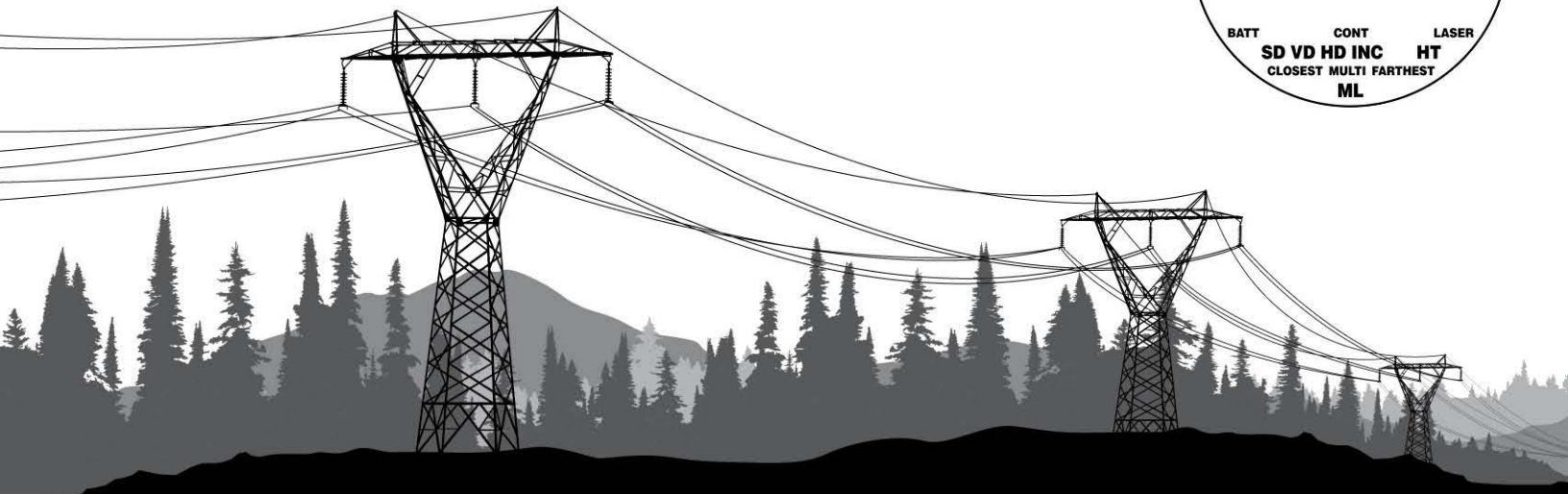
- Navigates through menus easily with graphical icons
- Ranges extremely far without a reflector
- Outperforms and costs less than many recreational rangefinders

NEW!



TruPulse® 200/B

- Produces better distance and inclination accuracy
- Increases scope magnification and field of view
- Transfers data via serial port and Bluetooth®



ELECTRIC UTILITIES

- Span, Sag and Tension
- GIS Mapping
- Vegetation Management
- Pole Inventory



FORESTRY

- Tree Heights
- Buffer Zones
- Engineering Surveys
- Sale Layout



NATURAL RESOURCES

- Ecosystem Management
- Watershed Analysis
- Geologic Mapping
- Environmental Surveys

LTI 360° TruVector Compass Technology™

- Produces accurate and repeatable Azimuth (AZ) results regardless of the tilt or pitch you use to aim the laser
- Recognizes conditions that will affect the reliability of the compass accuracy and prompts you to recalibrate
- Calibrates easily with a simple field routine that can be completed in less than a minute



TruPulse® 200X

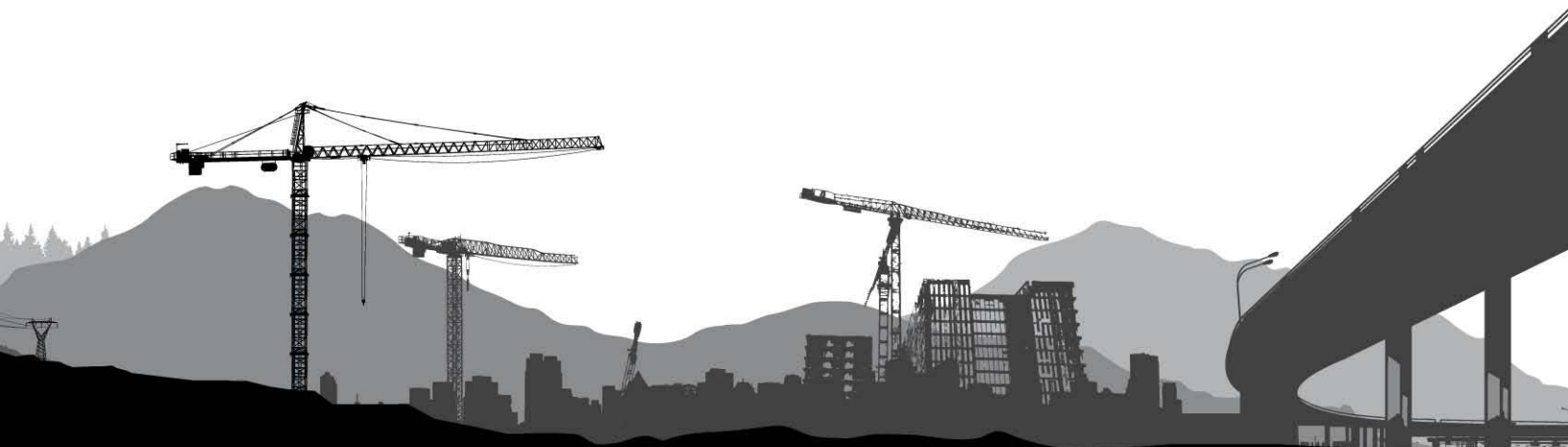
- Achieves the highest distance and inclination accuracy
- Adjusts to any lighting conditions using the in-scope LED display
- Withstands harsh conditions with rugged, waterproof housing

NEW!

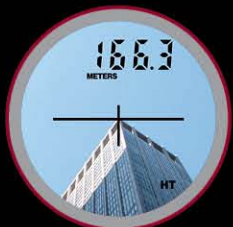


TruPulse® 360°/B/R

- Provides full measurement capability with AZ + INC + SD
- Solves 3D missing line calculations between any two remote points
- Integrates with GPS for efficient GIS data capture



- CONSTRUCTION**
- Stockpile Volumes
 - Site Inspection
 - Crane Positioning
 - Face Profiling



- TELECOMMUNICATION**
- Site Inspection
 - Antenna Height
 - Obstruction Mapping
 - Material Estimation



- PUBLIC WORKS**
- Land Use Planning
 - Facility Mapping
 - Asset Inventory
 - Emergency Response

Measurement Solutions

HD = Horizontal Distance

INC = Inclination

SD = Slope Distance

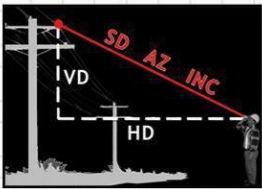
HT = Height

AZ = Azimuth

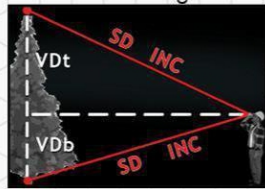
ML = Missing Line

VD = Vertical Distance

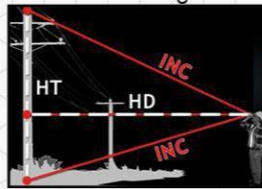
1-Shot HD Mode:



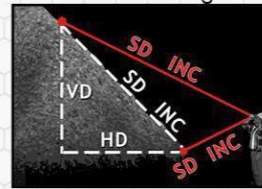
2-Shot Height:



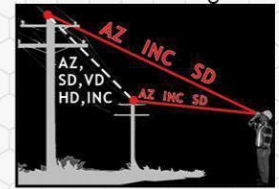
3-Shot Height:



2-Shot 2D Missing Line:



2-Shot 3D Missing Line:



Calculated by TruPulse:

Measured by TruPulse:

Specifications



	TruPulse® 200L	TruPulse® 200/B	TruPulse® 200X	TruPulse® 360°/B	TruPulse® 360°R
Measures Azimuth with TruVector Compass Technology	No	No	No	Yes	Yes
Calculates SD, HD, VD and INC Between Two Remote Points	Yes	Yes	Yes	Yes, plus AZ	Yes, plus AZ
Distance Accuracy to Typical Targets	+/- 1 m (3 ft)	+/- 30 cm (1 ft)	+/- 4 cm (1.6 in)	+/- 30 cm (1 ft)	+/- 30 cm (1 ft)
Distance Accuracy to Very Distant/Weak Targets	+/- 1 m (3 ft)	+/- 0.3 to 1 m (1 to 3 ft)	+/- 4 to 30 cm (1.6 in to 1 ft)	+/- 0.3 to 1 m (1 to 3 ft)	+/- 0.3 to 1 m (1 to 3 ft)
Inclination Accuracy	+/- 0.5° Relative	+/- 0.25° Typical	+/- 0.1° Typical	+/- 0.25° Typical	+/- 0.25° Typical
Azimuth Accuracy	N/A	N/A	N/A	+/- 1° Typical	+/- 1° Typical
Max Range to Reflective Targets	1750 m (5,740 ft)	2000 m (6,560 ft)	2500 m (8,200 ft)	2000 m (6,560 ft)	2000 m (6,560 ft)
Max Range to Non-Reflective Targets	1750 m (5,740 ft)	1000 m (3,280 ft)	1900 m (6,233 ft)	1000 m (3,280 ft)	1000 m (3,280 ft)
RS232 Serial Com Port	No	Yes	Yes	Yes	Yes
Bluetooth® Com Port	No	B model	Yes (iOS compatible)	B model	Yes
Scope Magnification / In-Scope Display Type	4x / LCD	7x / LCD	7x / LED	7x / LCD	7x / LCD
In-Scope Field of View	131 m @ 915 m away (430 ft @ 3,000 ft)	100 m @ 915 m away (330 ft @ 3,000 ft)	100 m @ 915 m away (330 ft @ 3,000 ft)	100 m @ 915 m away (330 ft @ 3,000 ft)	100 m @ 915 m away (330 ft @ 3,000 ft)
Waterproof / Environmental	No / IP54	No / IP54	Yes / IP56	No / IP54	Yes / IP56
Temperature	-20° to 60° C (-4° to 140° F)	-20° to 60° C (-4° to 140° F)	-20° to 60° C (-4° to 140° F)	-20° to 60° C (-4° to 140° F)	-20° to 60° C (-4° to 140° F)
Battery Type (8 hrs. of continuous use)	(1) CR123A	(2) AA or (1) CRV3	(1) CR123A	(2) AA or (1) CRV3	(1) CR123A
Size	11.5 x 10 x 5 cm (4.5 x 4 x 2 in)	12 x 5 x 9 cm (5 x 2 x 3.5 in)	13 x 5 x 11 cm (5.2 x 2.1 x 4.5 in)	12 x 5 x 9 cm (5 x 2 x 3.5 in)	13 x 5 x 11 cm (5.2 x 2.1 x 4.5 in)
Weight	220 g (8 oz)	285 g (10 oz)	382 g (13.5 oz)	285 g (10 oz)	385 g (13.6 oz)
Available Colors	LTI Red	Yellow Grey	LTI Red	Yellow Grey	Black

For further information please call or email us



Measuring, levelling
and layout solutions
for all trades

Mining - Aligning - Engineering - Environmental - Civil Construction
Surveying - Geological - Glass Testing - Speed Detection

GSR Laser Tools

Unit 7/7 Prindiville Drive
Wangara WA 6065
Ph: 08 9409 4058
sales@gsrlasertools.com.au
www.gsrlasertools.com.au

© LTI 2014 1301 EN