

LASERGRADER

DIAL IN SINGLE AND
DUAL GRADE LASER
TRANSMITTERS



MCE
LASERS

SERVING AUSTRALIA SINCE 1984
GSR LASER TOOLS
GEODETIC SUPPLY & REPAIR

GSR Laser Tools
Unit 7 / 7 Prindiville Drive
Wangara WA 6065
Ph: 08 9409 4058
sales@gsrlasertools.com.au
www.gsrlasertools.com.au

ROTATING GRADE LASERS

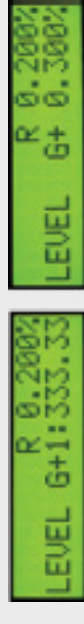
FEATURES

- Locked Function - when activated, all control keys on laser are locked.
- Two grade input systems - a world first in user-friendly technology. Input the grade directly using the switch pad or in increments using the arrow keys.
- Battery can be charged while laser is in use, from 240 V AC or 12-24 V DC power source.
- Grades in increments of 0.001% - allows for accurate work (LS.230 model only)
- Two grade display modes - display the grade either as a percentage or a ratio.

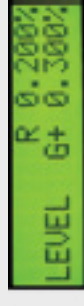
- Automatic warnings - warnings for service required, low battery, self-levelling limit, and level automatically displayed on the LCD
- Elevation alert - if the laser is accidentally moved the laser beam will switch off and stop rotating to alert the operator.
- Australian tough - Australian owned and made. Fully machined housing and all metal construction for tough working environments

OPTIONS

- Coned rotating head
- Dual or single grade
- Vertical axis
- Visible or invisible beam



RATIO

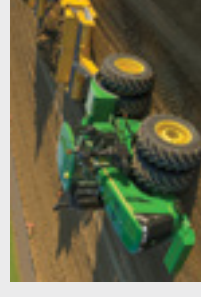


PERCENTAGE

APPLICATIONS



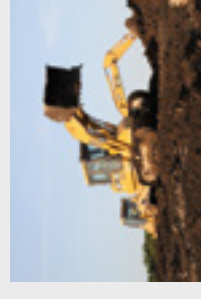
EARTH MOVING



LAND LEVELING



ROAD CONSTRUCTION



SITE WORKS

**MADE IN AUSTRALIA
AND DEVELOPED WITH
25 YEARS OF SUPPORT BY
AUSTRALIAN FARMERS.**

**1.4 KM WORKING RANGE
WITH AN INDUSTRY
BEST ACCURACY.**

AVAILABLE MODELS



LCG.A
Automatic, Single grade laser with manual mode and rechargeable battery pack



LS.230.E
Automatic, Long range Ag dual grade laser with manual mode and rechargeable battery pack



LS.230R.E
Automatic, Long range Ag dual grade laser with radio remote, manual mode and rechargeable battery pack



LS.230.A
Automatic, Civil dual grade laser with manual mode and rechargeable battery pack



LS.230R.A
Automatic, Civil dual grade laser with radio remote, manual mode and rechargeable battery pack



LS.230.AHG
Automatic, Civil dual grade laser with steep slope, manual mode and rechargeable battery pack

ACCESSORIES

A range of accessories such as mounts and adapters have been developed to make the Lasergrader more efficient, easy to use and versatile. For more details refer to 'LaserGrader Accessories' brochure from MCE Lasers or visit www.mcelasers.com.au



Universal Quick Release (A.220.014)

Spring loaded lever, comes with one of two mounting rings:
(A) 5/8" external thread universal laser level mounting ring (A.220.026) or
(B) Spectra Physics (SP) laser mounting ring (A.SP.010)



Scope

For accurate aligning of the axis



Tilt adaptor

Cast metal, for 10% to 50% slope adjustments. Used with laser when grade is steeper than leveling range.
Three mounts: 10% to 24%; 24% to 38% & 38% to 50%

Look no further!

Looking for a proven, reliable and robust dual grade laser? A laser you can count on to increase efficiency? A laser that is site tough? The LaserGrader series meets all of your job site needs, from layout to grade control.

Need Grade control, we've got you covered!

Need single-slope or dual-slope grades. The sloping feature will allow you to tackle sloped trenches for sewer, or final grade on areas with mild slopes for drainage and land levelling.

Decades of Experience!

MCE Lasers instruments use the latest advancements of High-quality optoelectronic circuitry this keeps our products working smarter not harder and intern gives you the best possible product for your dollar. We've been part of your industry for decades, we listen and care. What we've learned over decades allows you to do your job in seconds

Tried the rest now its time for the best!

Are you fed up with difficult-to-handle devices which are over complicated? All LaserGrader lasers self-level accurately every time at the push of a button, The large LCD lets you enter the required grade at the push of just a few buttons never make a mistake again.

FEATURES	LCCA	LS.230.E	LS.230RE	LS.230A	LS.230RA	LS.230.AHG
Laser type	635 nm red laser diode	635 nm red laser diode	635 nm red laser diode	635 nm red laser diode	635 nm red laser diode	635 nm red laser diode
Laser power	3mW	3 mW nominal	3 mW nominal	3 mW nominal	3 mW nominal	3 mW nominal
Laser class	Class 2M	Class 2M	Class 2M	Class 2M	Class 2M	Class 2M
Accuracy	+/- 15 arc seconds	± 10 arc seconds	± 10 arc seconds	± 15 arc seconds	± 15 arc seconds	± 15 arc seconds
Grade range	-10% to +10%	-5%to +20%	-5%to +20%	-5%to +20%	-5%to +20%	-5%to +50%
Self-levelling range	+/- 6.0%	± 7.5%	± 7.5%	± 7.5%	± 7.5%	± 7.5%
Working range	500 m radius, 1km diameter (tested with Laserguide sensor)	700 m radius, 1.4 km diameter (tested with Laserguide sensor)	700 m radius, 1.4 km diameter (tested with Laserguide sensor)	500 m radius, 1km diameter (tested with Laserguide sensor)	500 m radius, 1km diameter (tested with Laserguide sensor)	500 m radius, 1km diameter
Rotating head speed	continuously adjustable	200, 300, 400, 500 or 600 rpm	200, 300, 400, 500 or 600 rpm	Continuously adjustable	Continuously adjustable	Continuously adjustable
External power source	NA	12 - 24 V DC	12 - 24 V DC	12 - 24 V DC	12 - 24 V DC	12 - 24 V DC
Internal power source	Lithium batteries	Rechargeable Ni-Mh battery	Rechargeable Ni-Mh battery	Rechargeable Ni-Mh battery	Rechargeable Ni-Mh battery	Rechargeable Ni-Mh battery
Operating time	20 hours	40 hrs	40 hrs	40 hrs	40 hrs	40 hrs
Charging input	240VAC only	240VAC - 12 - 24 V DC	240VAC - 12 - 24 V DC	240VAC - 12 - 24 V DC	240VAC - 12 - 24 V DC	240VAC - 12 - 24 V DC
Charging time	6 hours	12 hrs approx.	12 hrs approx.	12 hrs approx.	12 hrs approx.	12 hrs approx.
Dimensions	220 x 155 x 155 mm	270 x 175 x 200 mm	270 x 175 x 200 mm	270 x 175x 200 mm	270 x 175 x 200 mm	270 x 175 x 200 mm
Weight	3.2kg	8.25 kg	8.25 kg	7 kg	7 kg	7 kg
Battery type	N/A	N/A	9 V battery	N/A	9 V battery	N/A
Operating range	N/A	N/A	700m (conditions dependent)	N/A	700m (conditions dependent)	N/A
Dimensions	N/A	N/A	250 x 100 x 38 mm (inc. antenna)	N/A	250 x 100 x 38 mm (inc. antenna)	N/A
Weight	N/A	N/A	0.7 kg	N/A	0.7 kg	N/A

LASER UNIT

CONTROL



GSR Laser Tools
Unit 7 / 7 Prindiville Drive
Wangara WA 6065
Ph: 08 9409 4058
sales@gslasertools.com.au
www.gslasertools.com.au